



THE LINDENER

Voice of The Linden Fund ... one, one dutty build dam

The Lindener Newsletter
published by Linden Fund
Volume 3, Issue 2 • Summer 2003

Website: www.lindenfund.org
Email: secretary@lindenfund.org

Linden Fund Helps Linden & Wismar Hospitals in April

Paraphrasing the Guyana Chronicle article of 4/21 by Joe Chapman ... Speaking at the 4/18 presentation in Linden, Dr. Vincent Adams, LFU Chairman, said the shipment of vital supplies and equipment would be shared with the Mackenzie, Wismar and Ituni hospitals, enabling delivery of first-rate health care to the residents of Region Ten (Upper Demerara/Berbice). The shipment, including hospital beds, sutures, IV equipment etc, will go a long way towards improving in-patient and out-patient care.

The Chairman noted that, in partnership with MedShare International, a Georgia-based non-profit that collects surplus medical supplies/equipment, the presentation is the culmination of months of hard work by the LFU Board and MedShare. Adams said "the LFU puts a great deal of effort into developing programs and initiatives in the areas of health and education and I cannot tell you how happy I am to see this particular project become a reality".

The Chairman thanked Dennis Parkinson, Hospital Administrator; Linmine CEO Gordon Gumbs, Matron Christopher and LHC staff instrumental in identifying the needs of the hospital; Atlanta-based Dr. Karen Godette, LFU Board member who led efforts to get the medical supplies; MedShare International; LFU, which paid some G\$1M in shipping costs; Public Works and Communication Minister, Anthony Xavier who facilitated the clearing and transporting of the container to Linden; Frankie Comacho and CV Shipping, and John Fernandes Limited for ensuring that the container reached Guyana. Adams also thanked the entire Linden community, which is behind the Linden Fund. Other notables attending the handover were Region 10 Chairman, Mortimer Mingo; Director of Regional Health Services, Dr. B.S. Ramsarran who represented the Health Minister; Regional Health Officer, Dr. Pansy Armstrong; Linden Fund (Guyana) Secretary, Jenny George-Parkinson and Board members Abdul Kadir and John Joseph.



Presentation to Hospital Administrator, from left: Abdul Kadir, hospital staff, Dr. Adams and others.

Member Profile



Denis Morgan

Family: "Wife Pia, children Meko age 15, Yannick age 12, and Krista age 10."

Occupation: "President/CEO Alcoa Wireless Services (formerly Pacific 17), which was acquired by Alcoa in November of 2001. I was the majority shareholder/ President-CEO of Pacific 17 from 1989 - 2001 prior to acquisition. Alcoa Wireless Services provides engineering, construction, installation and network implementation services nationwide to major telecommunications carriers/OEM's, such as Sprint, AT&T Wireless, Cingular, T-Mobile, Verizon, Lucent, Nortel, and Ericsson."

Day to day professional activities: "I am a registered civil engineer in the states of California and Nevada, and a licensed general contractor in the states of California, Florida and Nevada. Throughout my engineering career from 1975 to present, I have designed, built and project managed major civil/ structural infrastructure projects such as building, waterfront, transportation, water/wastewater and telecommunications facilities in Guyana, Trinidad and USA."

Background & Education: "Born and raised in Kitty, Georgetown. I attended St. Stanislaus College; Government Technical Institute, Georgetown (OTD in Building Construction, City and Guilds of London 1971); University of Guyana: (HTD in civil

continued on page 5

Moving Forward

Welcome to the latest issue of **The Lindener**, which has a new look, but continues to focus on the community and report of the activities of the Linden Fund. For those of you seeing *The Lindener* for the first time, it is a semi-annual newsletter with information about the members & the activities of The Linden Fund organization, no matter where in the world it's located. As usual, all ideas and contributions to the newsletter are welcome.

The first half of 2003 has been wonderful for the Fund and with your continued and increased participation, we can and will do more. Some highlights of 2003 initiatives:

- The G\$85.5 Million dollar Medical Shipment of vital supplies and equipment to the Linden Hospital Complex, which includes hospitals in Mackenzie, Wismar and Ituni. This \$450,000 US shipment was handed over to the LHC, to great local press, in April 2003 by LFU Chairman, Dr. Vincent Adams.
- In May 2003, the press picked up another LFU story on the \$240,000 (G) dollar scholarship awarded to MHS student Yonette Walton who earned 9 Grade 1 at CXC exams (the equivalent to 9 As at O'Levels) in 2002. She is currently pursuing A'Levels at MHS and the award rewards her effort and determination to success, all values that shared our lives in our once thriving but now struggling hometown.
- The 4yr, \$3.8M Guyana dollar LFU/Morgan UG Scholarship program continues in its 2nd year and will continue to provide full tuition, books, transportation, and summer stipend to 2 Linden residents through the 2006 school year.
- 2 new UG scholarships, sponsored by the LFU, providing the same level of support to 2 news students were also launched. The deadline for submission of applications for Linden residents is July and the 2 new scholarship winners will be announced at the annual LFU dinner on August 30 in NY.

Congratulations to the members of the NY Chapter on its successful annual "Spring Affair" in May. Folks had a blast! The NJ Chapter is looking forward to its annual Family Day on July 20th, so do spread the word and enjoy the fun.

Have you sent in your annual membership yet? We're still in our annual membership drive and many of your received applications in the mail or by email. A handy membership application is available on page 5.

Enjoy the new look of **The Lindener**!

Mission Statement

The mission of the The Linden Fund USA is to promote and sustain a healthy Linden community, with a particular focus on education. The Linden Fund, USA shall form strategic partnerships with other entities with a similar focus in addition to those seeking to develop and deploy new technologies to reinvigorate the mining industry, the lifeblood of the Linden community. It shall provide funding to requests, projects and initiatives that promote and enhance the social and economic development of the town.

Table of Contents

Member Profile	1
Helping Linden Hospitals	1
Mission Statement	2
Moving Forward	2
LFU Annual Dinner	2
WG – Linden History Series	3
NJ Chapter – Annual Picnic	3
LFU Helps Top MHS Scholar	5
Membership Application	5

The Linden Fund, USA *Presents* *The 5th Annual* *Dinner-Dance*



Saturday • August 30, 2003
(Labor Day Weekend)

Join us at the fabulous **Fleur de Lis**

870 Cypress Ave • Ridgewood, Queens, NY
718/366-6700

\$70 per Person • OPEN BAR • 9 PM Sharp!

Music by Sugarcane International
Dance to the Sounds of I.N.K. Band!

FOR MORE INFORMATION & TICKETS
email: walcott@rci.rutgers.edu



THE LINDENER



Linden History Series

by Clarence E. London

For those who came in late....

Once upon a time, there was a thriving orderly mining community called Mackenzie, situated on the east bank of the Demerara River, 65 miles from Georgetown. On the west bank was Wismar, with its low-lying hills and rolling plains, greenery and abundant water resources. With its natural topographic beauty, Wismar had the potential for be-



1960s' view of the Alumina Plant & Mackenzie-Wismar/Christianburg on the Demerara River.

In Wismar and Christianburg, there were existing elementary church schools, but few brave parents residing in Mackenzie risked sending their children there for fear of their cherished ones losing their lives crossing the seemingly dangerous river at least four times per day. Among other things, unfounded albeit convincing rumors abounded about the presence of the Masacuraman, a fearsome hairy, half-man, half-animal, together with the lovable, beautiful, but very seductive FairMaid, a long haired half- woman, half-fish; both creatures were alleged to be living and lurking below the dark surface of the fast flowing river awaiting the opportunity to seize a human victim by literally appearing and capturing him from one of the boats. Additionally, there was at least 10 to 15 feet difference in level between low, and high tides. The existing ferocious schools of always-hungry Piranhas were perhaps the only real mortals that could easily consume, or evoke the disappearance of any humankind within the twinkling of an eye.

continued on page 4



The Wismar-Mackenzie Bridge on the Demerara River – a view to the West.

ing a model community, but never quite achieved that order, a designer's dream that never quite came true. In fact, Wismar was for a long time, the gateway to the balata, gold and diamond fields, as well as the cattle trail into the hinterland via a slow lumbering 19-mile railway to Rockstone on the Essequibo river. It was possible to jump off that moving train, reap a pineapple or two from one of the several nearby farms, and with little effort, return to the train that was still in motion.



THE LINDEN FUND, USA
New Jersey Chapter

4TH ANNUAL FAMILY DAY
(FUN, FOOD, GAMES & PRIZES)

SUNDAY, JULY 20, 2003



CEDAR BROOK PARK, PLAINFIELD, NJ
Adults: \$10 Children: \$7

TIME: 11AM until Dark

FOR TICKETS - CONTACT

Michael Campbell (973) 399-9338
Yvonne Jones-Hamilton (973) 242-1327
Geraldine Joseph-Watson (718) 250-3476
Hazel Retemiah (732) 398-8803
Keith Semple (908) 755-7088
Donna Walcott (908) 964-3574



THE LINDENER

continued from page 3

At that time, there was only one authorized crossing point on the river on the Mackenzie side and this was located at the Wismar Street boat landing. The jagged foreshore riverbank along Cockatara was inhospitable territory that denied access for anyone who dared to bypass the authorized landing. For the adventure, indeed daily necessity of moving from Wismar to Mackenzie, passengers were obliged to lend manpower with provided oars in order to move a captained ferryboat between the two banks of the river. It was always entertaining to witness the impromptu team “drag races” to row a boat across the 200-meter waterway. Employees attempted such seemingly unrewarding, but competitive races, at the end of a hard work day, as they tested their remaining strengths, skills and dexterity with the oars. Organizers of famed boat races would indeed have relished these daily “scrubby” drag races across the Demerara river; sadly, no prizes or trophies were ever given to the unheralded, and forever unknown victors.

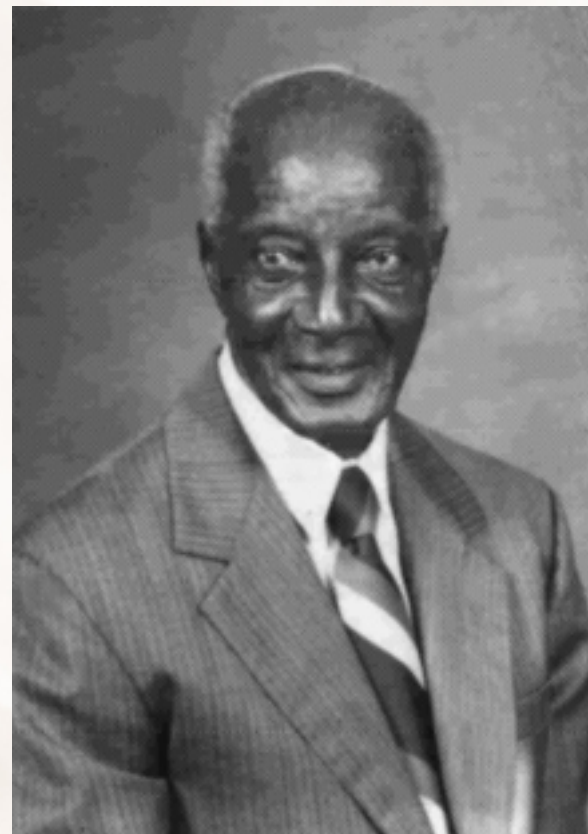
During these crossings, it was also imperative to avoid contact with the large ocean-going vessels, armed with anti-aircraft, and anti-submarine guns on their fore and aft decks. Yes, we were in the midst of World War II, hence the need for such protection against the menace of the Nazi submarines in the north and south Atlantic oceans. The traffic on the river was steady and almost continuous as vessels of all types, shapes, configurations, and dead-weight tonnages - including floating improvised thatched huts with lumber latched together, but dangerously hidden from view below the surface - all plied the busy waterway, and as it turned out, the only available link to the capital city, and indeed the rest of the world. As usual, the game of “chicken” was played out almost on a daily basis during which the manpower-driven wooden ferryboats tried to outrun the mechanized power-driven steel vessels. In other words, rather than cross safely at the stern of the albeit slowly-moving chunk of steel, they crossed at the bow, with a degree of impunity and disregard for their own well being and safety. Fortunately, most lived to talk about that silly game!

The bauxite company, Demba at the time, constructed an ultra modern primary school in 1940 in Mackenzie, with provision for future expansion to perhaps 350 students. Its design was patterned after the “L-shaped” Broad Street government school in Georgetown. Classrooms were separated by movable, dividing walls. Furniture was the customary benches and desks for the students, but a chair and table for the teacher. There were separate hat rooms for boys and girls, teachers’ rooms, headmaster’s room, gymnastic facilities that included vaulting horse, equilibrium bar, together with assorted mats. Within the fenced perimeter of the premises, there was as an ample playground, equipped with well-constructed swings, trapeze rings, parallel bars, slides, and seesaws. Additionally, there was space for a small manageable vegetable home garden.

Enter WG (Walter Griffith) ...

To manage such a facility, it was necessary to hand pick a highly qualified, young individual. After a diligent search and evaluation, **Walter George Griffith** was chosen. The famed WG, as we called him behind his back, of course; face-to-face, he was always Sir. WG’s team comprised Wishart Thomas in charge of Standard V, Edgar Wilson standard VI, Mrs. Nero did standard I, while the two pupil teachers Leslie James and Lionel Narine collaborated with Mrs. Edgar Wilson to handle Standards II and III.

In addition to his excellent academic credentials, WG was a prominent athlete, one who excelled in the 100 yards sprint. Also, he was a very good right-armed, medium-pace bowler who represented the then colony of British Guyana (BG) at intercolonial matches. I vividly recollect when WG was hurriedly recalled to the BG team after left-handed Bajan captain John Goddard ravaged the BG team for 179 runs, not out. WG vindicated his callback when he bowled Goddard for a mere 5 runs in the next match. At the time he came into our young lives, WG was a tall, well-built man, about 5ft 10 ins, erect, probably weighing 175 pounds and likely in his late twenties or early thirties. I remember seeing him play lawn tennis with his buddies on the only nearby hard court, adjacent to the all-purpose recreation hall. His was a bellowing voice, added to which he had huge, rolling eyes, plus a gait that portrayed his sterling athletic qualities. He was always neatly attired, his shoes shone like glass, conceivably the result of hours of diligent application of shoe polish. We students learned to know when we might expect to receive excessive corporal punishment. His gray flannel trousers worn without a belt, was a sure signal that fire and brimstone will happen, especially during the daily mathematics tables sessions. Additionally, there was the customary trademark rubber band on his long sleeved shirt that was located on the upper arm muscles, those devices helped to keep the shirt cuffs at the wrist. One surmises that possibly he was obliged to purchase the extra large-sized shirts in order to accommodate the dimension of his neck, but this meant that the sleeves were too long for his relatively short arms, hence the need for the rubber bands!



Walter George Griffith (WG) in the 1980s



WG (front) with Mackenzie Primary faculty circa 1940



Mackenzie Primary student group shot circa 1940

*... Look out for WG Part 2
in the next issue.*



THE LINDENER

REWARDING EFFORT AND INITIATIVE – Fund grants scholarship to top CXC student



LFU Scholarship recipient Ms Yonnette Walton

Paraphrasing the May 5, 2003 article in the Guyana Chronicle by Joe Chapman

Mackenzie High School's top student Yonnette Walton, who established a new school record by gaining 9 subjects with Grade 1 at last year's CXC Examinations, (the equivalent to 9 A at O-levels) has been honored for her outstanding achievement by the Linden Fund, USA. Ms Walton will receive a total of G\$240,000 over a 2 year period to assist in her A-level studies at the school, in addition to covering expenses such as transportation and books.

Dr. Vincent Adams, Chairman of the Linden Fund, USA, who was in Guyana in to make the announcement said, "It shows that Linden still has the talent that cries out for, and deserves our help and encouragement." According to Adams, "the amazing thing about this young lady is that she chose to stay at MHS to do her A-level examinations and that is very impressive." He noted that most students would have wanted to get

away from their parents, get out of the community and be in the bright city, but Ms Walton chose to do her work at home.

The Chairman, himself a past student of MHS, recalled that in his time at school there were a lot of smart kids, but recognized Walton's achievement as "exceptional." He said that, based on school statistics, Ms Walton's results are the best ever recorded at MHS.

Dr. Adams said the amount offered to Ms Walton may increase based on her additional needs. He also noted that because of the stunning accomplishment, LFU plans on making this an annual award to students with outstanding CXC records who wish to pursue A-level studies or its equivalent.

Among those present at the scholarship announcement were Linden Fund - Guyana Secretary, Jenny George-Parkinson, Board member Abdul Kadir and Janice Gibson, Headmistress of MHS. Gibson expressed her gratitude to LFU for recognizing and rewarding the effort of Walton and noted that such gestures will serve to encourage outstanding performances from other students, not only at MHS, but from other schools in Linden.



At Linden Fund presentation to Yonnette Walton of MHS, from left: Abdul Kadir, Ms Gibson, Ms Walton, Dr. Adams and Ms Jenny George Parkinson

continued from page 1

Member Profile

engineering 1973, B. ENG in highway engineering 1975); City University of London 1978 – M.Sc. in structural engineering."

Volunteer activities: "Finance Chairperson of United Negro College Fund (San Diego), corporate sponsor to the Urban League, Neighborhood House, NAACP and several other organizations that provide educational, housing, and financial support to the community."

Values that shape your life? "Honesty, respect for all mankind, humility, teamwork, hard work; be relentless as you strive to achieve your goals."

What motivated your involvement with the Fund? "I believe that we should all strive to give back to the community/country that help to shape our lives. I agreed to be profiled because I would like to encourage our young people to set clear goals and stay on track, and I would like to remind them that we have all started with limited means and many obstacles along the way."

Editor's note: *Denis Morgan is the sponsor of the LFU/Morgan UG scholarship launched in 2002. This major project is a 4yr, \$3.8M Guyana dollar initiative that provides full tuition, books, transportation and summer stipend to 2 Linden residents through the 2006 school year.*

LFU MEMBERSHIP APPLICATION

Name: _____

Address: _____

City: _____

State/Zip: _____

Annual Dues: \$ _____ Yr: _____ (\$50 min)

All contributions are fully tax-deductible!

Higher donations earn you privileges.

For details, visit our Website or contact

any Board member of the LFU.

Return completed form and payment to:

The Linden Fund, USA
P.O.Box 3392
New York, NY 10163-3392

Contact:

Phone: 718/482-3150

Email: secretary@lindenfund.org

Website: www.lindenfund.org



THE LINDENER